

infiTOF-smartGC/Trap

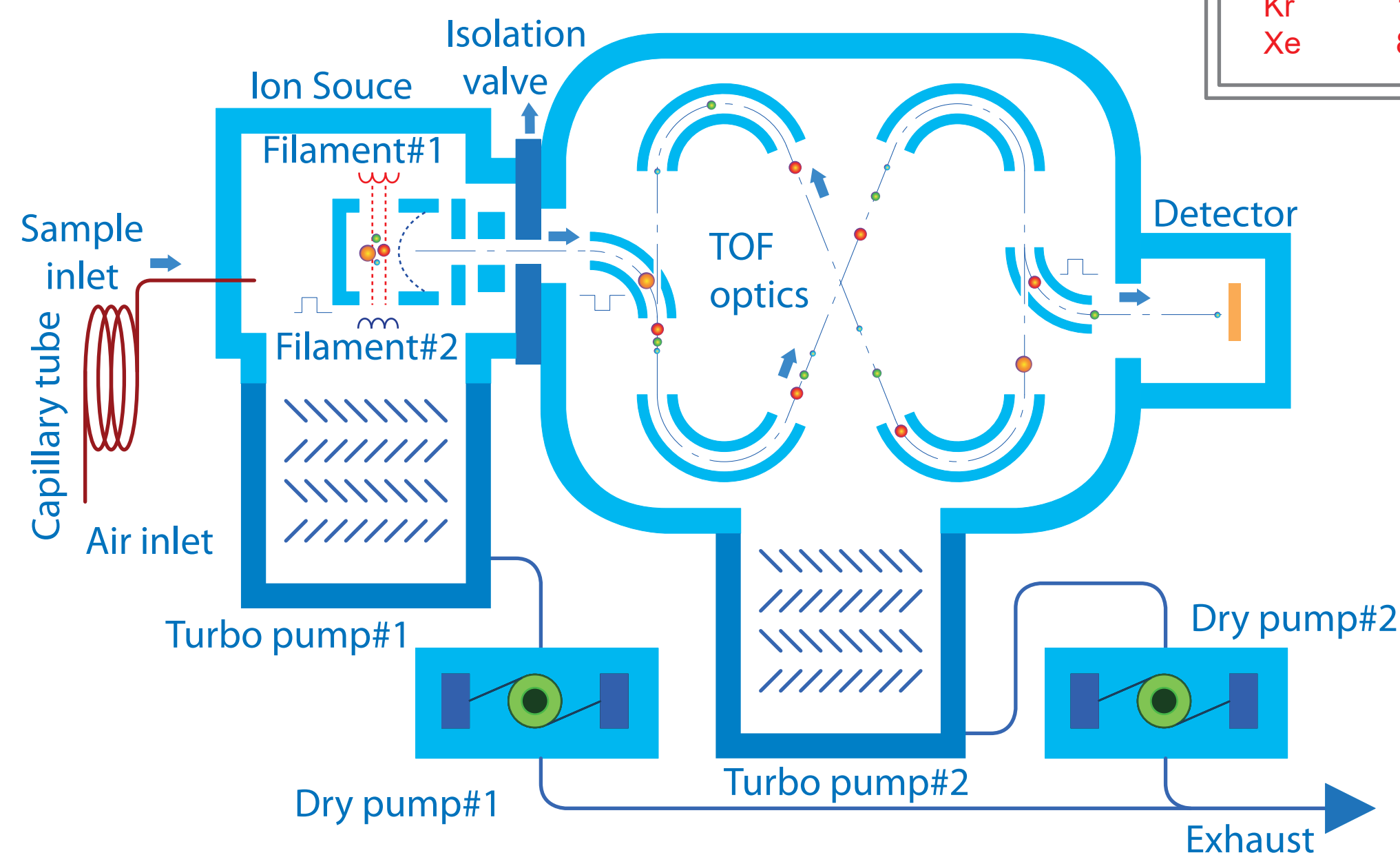
High Resolution and Compact Time-of-Flight MS with GC and cold-trap



Specification:

Resolution: >30,000
Mass range: m/z 1~1000
Sampling rate: 2GS/s
Ion source: EI
Dimensions (mm), Weight:
infiTOF: W270 x H465 x D550, 38.5kg
smartGC: W245 x H465 x D550, 18kg
Trap: W260 x H600 x D260, 5kg

Direct analysis of Noble gases in the atmosphere overall

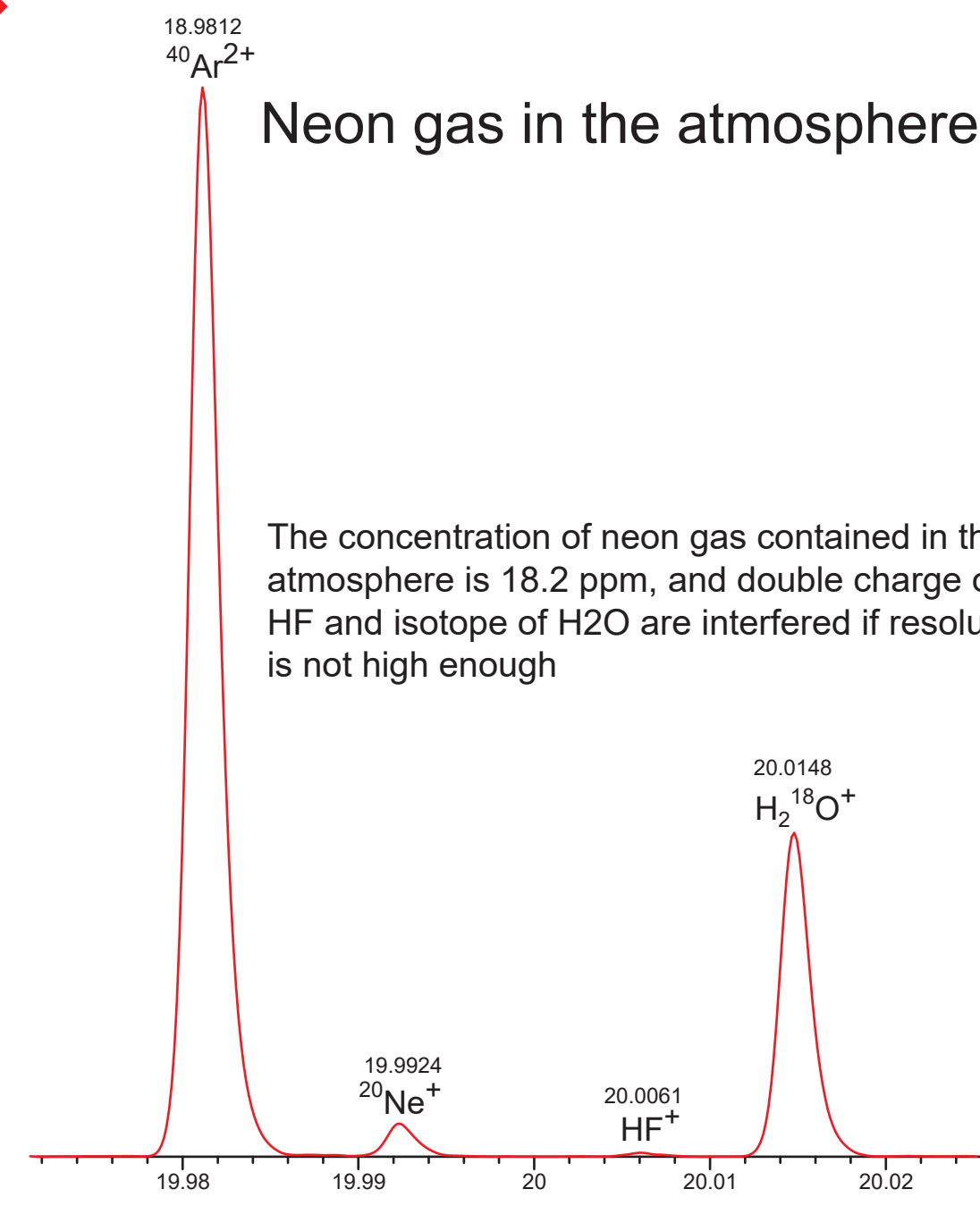


<http://www.msi-tokyo.com>

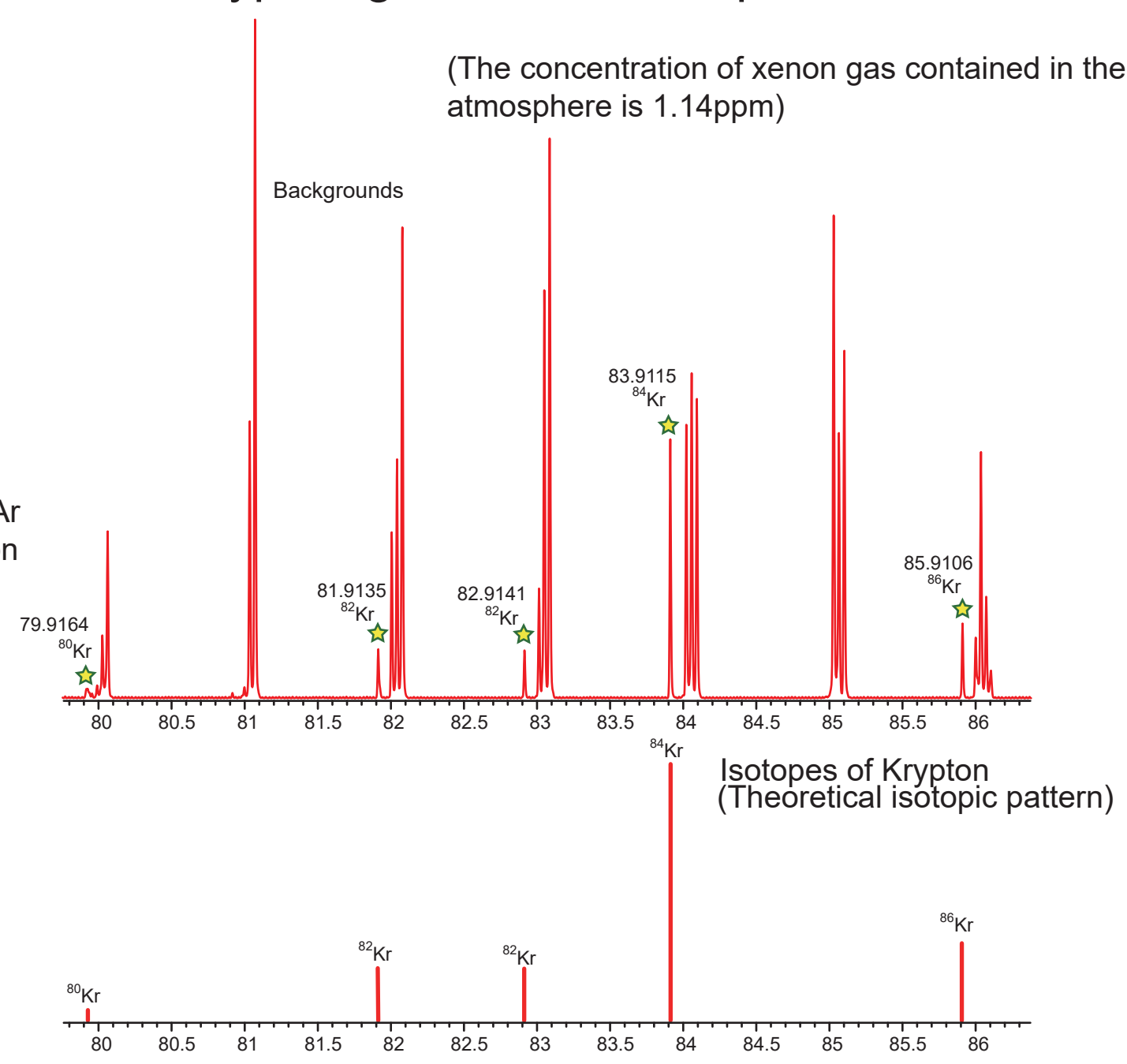
Direct analysis of Noble gases in the atmosphere

New!

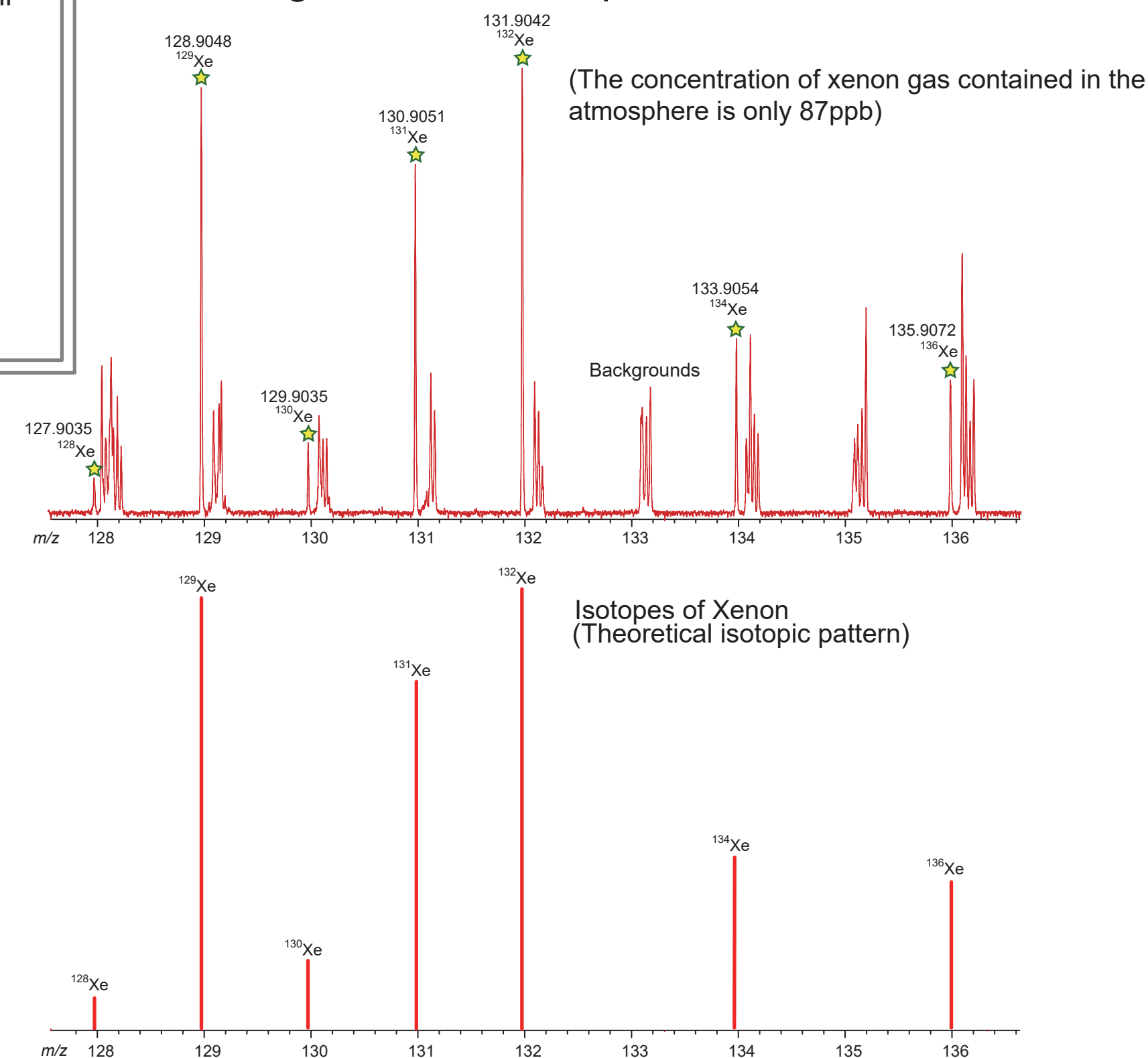
Neon gas in the atmosphere



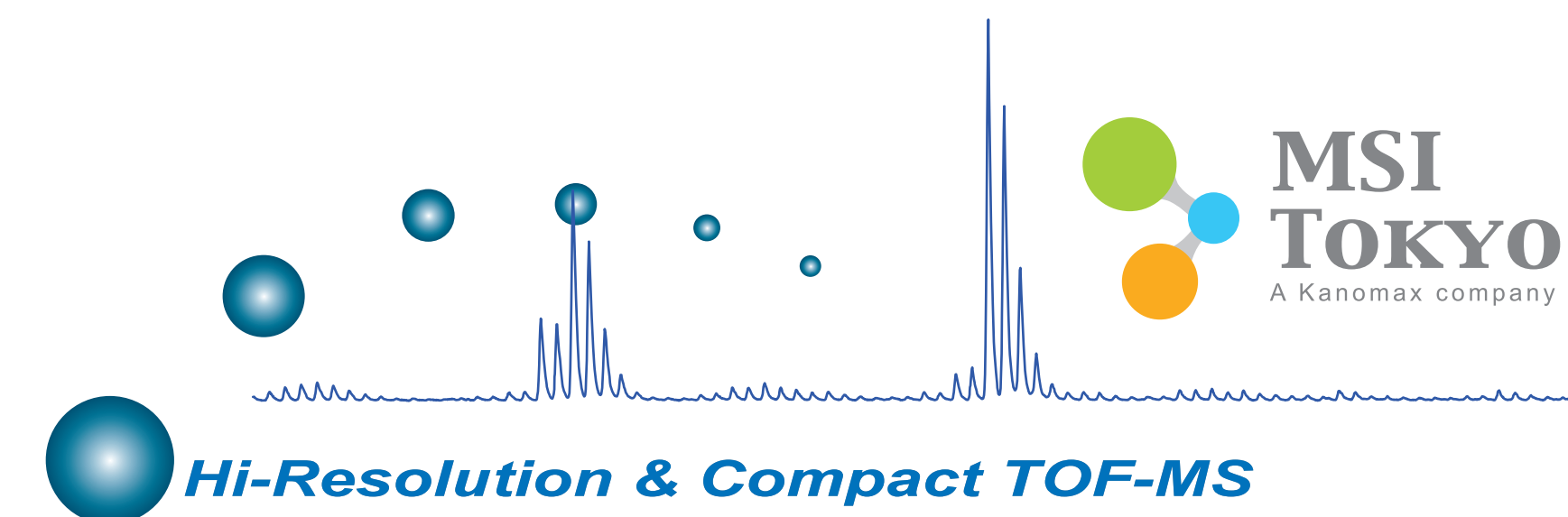
Krypton gas in the atmosphere



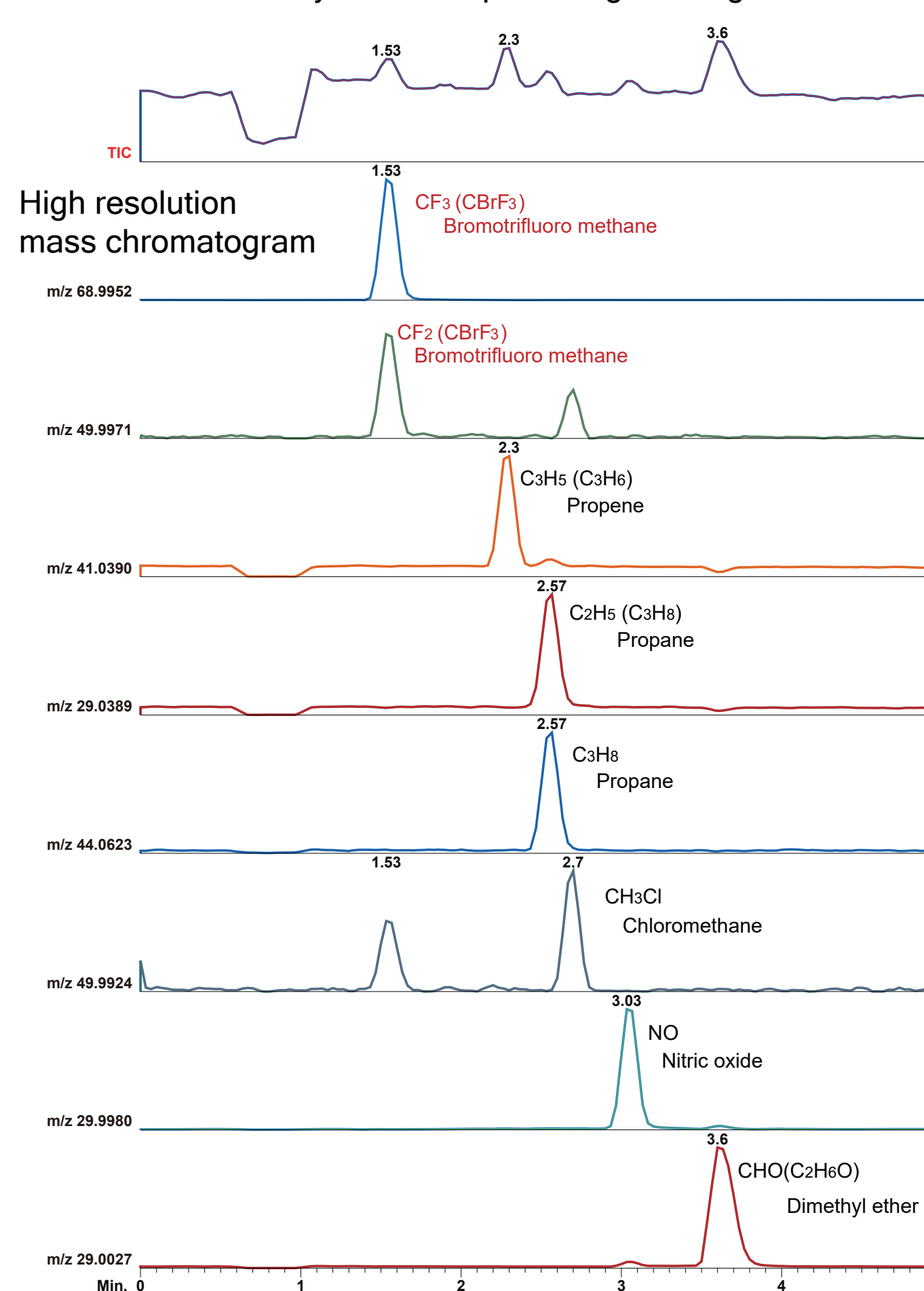
Xenon gas in the atmosphere



Composition in dry air	
N ₂	78.08%
O ₂	21%
Ar	0.93%
CO ₂	390 ppm
Ne	18.2 ppm
He	5.24 ppm
CH ₄	1.8 ppm
Kr	1.14 ppm
Xe	87 ppb



Contamination analysis in bulk process gas using smartGC



This product is a compact, high resolution time-of-flight mass spectrometer using multi-turn technology.

We have further commercialized infiTOF, which has been on sale so far, with gas chromatograph dedicated to analyzing gases, and smarTrap with special gas concentrating function which is difficult to analyze in GC.

GC is used for components that can be analyzed using GC, substances that are not good at GC, such as NH₃, NO_x, SO₂, H₂S, and HCl, are trapped at low temperature using smarTrap for improving sensitivity.